

Tilt Wheel Mouse Software



User Manual

Installing the Tilt Wheel Mouse software package

1. Insert the software CD into your CD/DVD drive.
2. The following screen should automatically pop up. If not, follow the additional instructions below. Click **Next**.

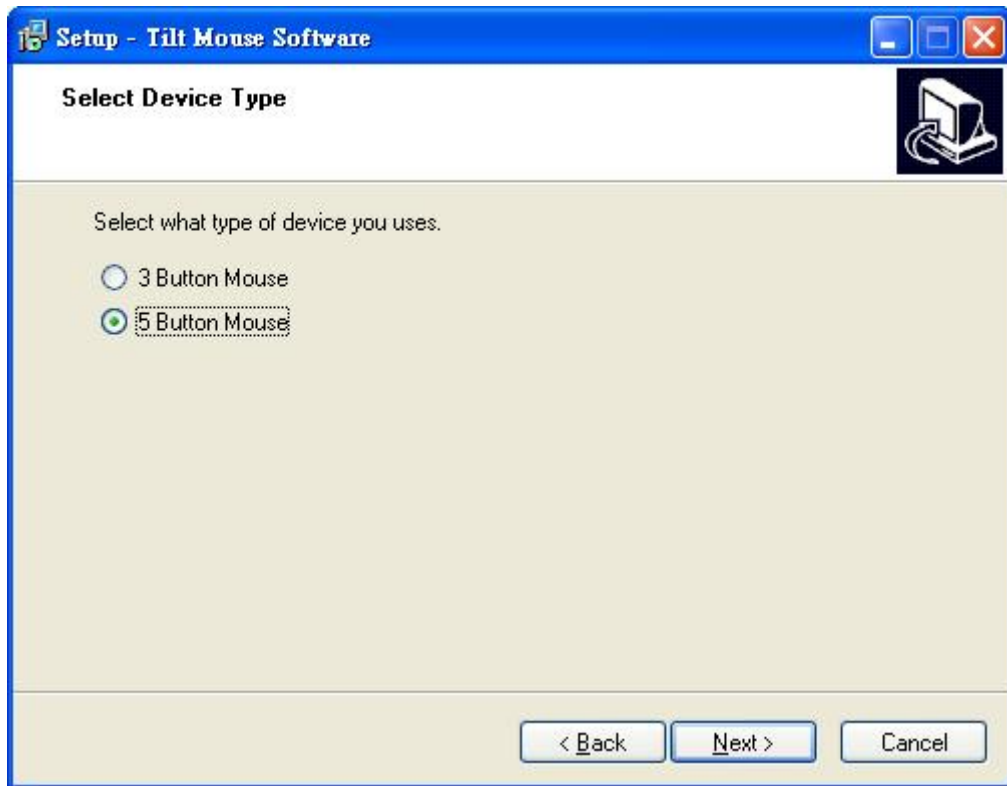


****Note**** If your CD/DVD does not start automatically and the above option does not appear, then follow instructions below.

a) Double click on your CD/DVD drive icon	
b) Double Click on “ Setup ”	
The “Welcome to the Tilt Wheel Mouse Software Setup Wizard” will appear. Click Next .	

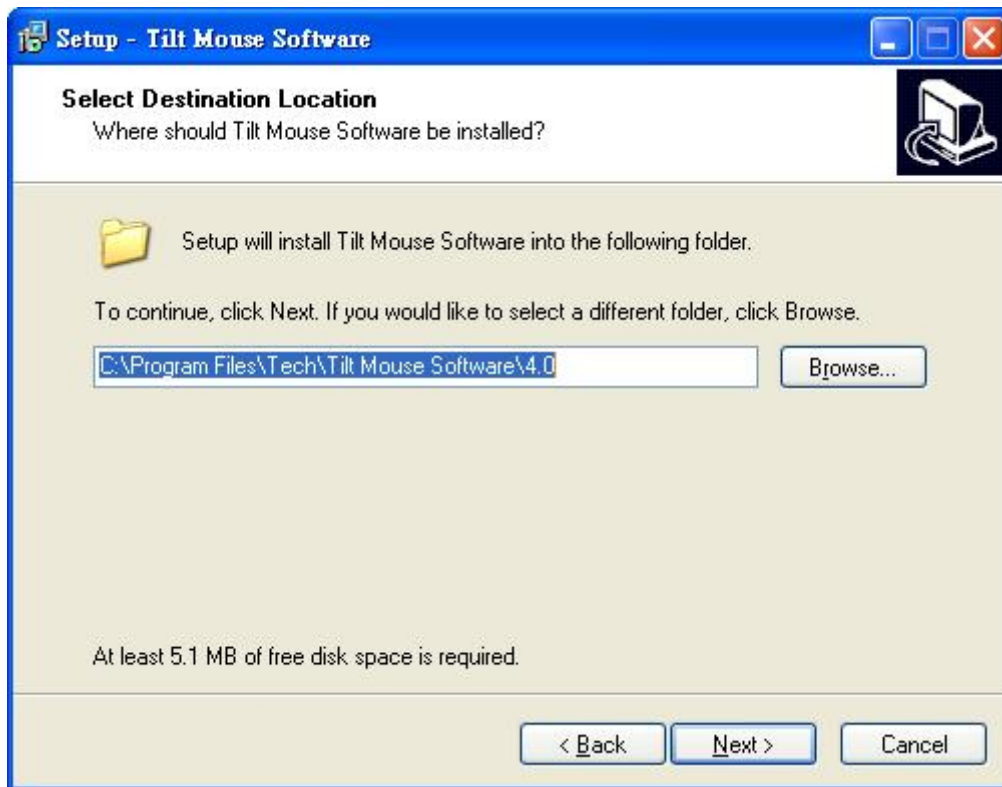
Tilt Wheel Mouse Software Manual

3. Choose the option with the number of buttons on your mouse. (If the mouse has two buttons with a scrolling wheel, click 3 Button Mouse.) Click **Next**.

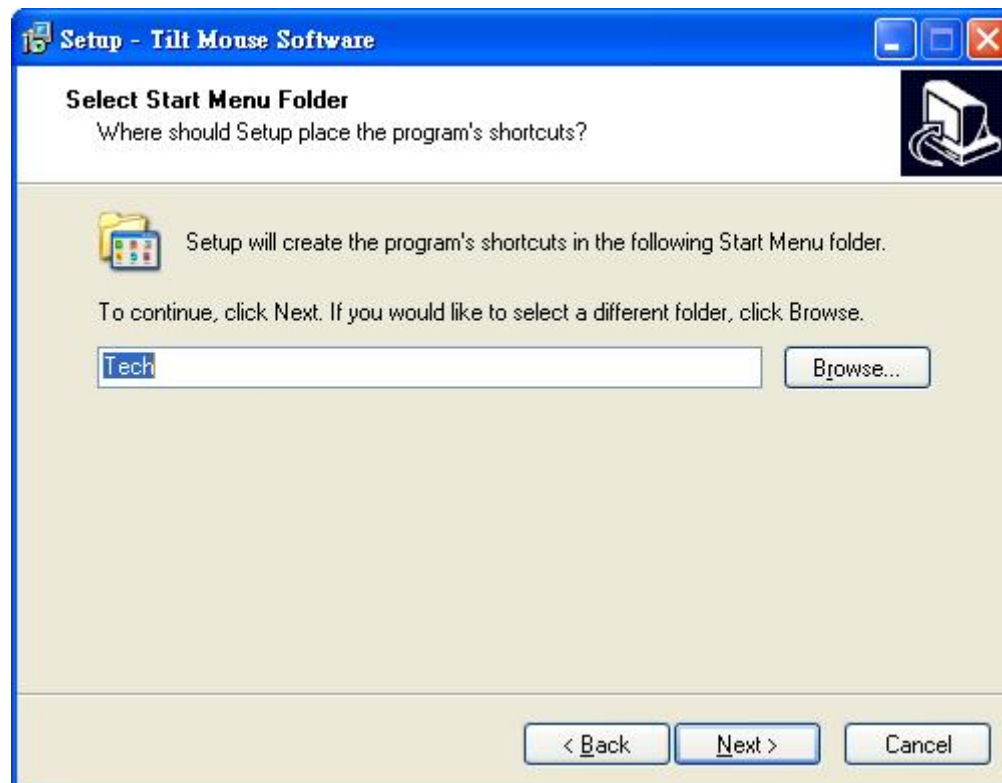


4. The default installation directory is shown. Click **Browse** to change the installation location. Click **Next** to continue. (Takes up about 5 megabytes of space)

Tilt Wheel Mouse Software Manual

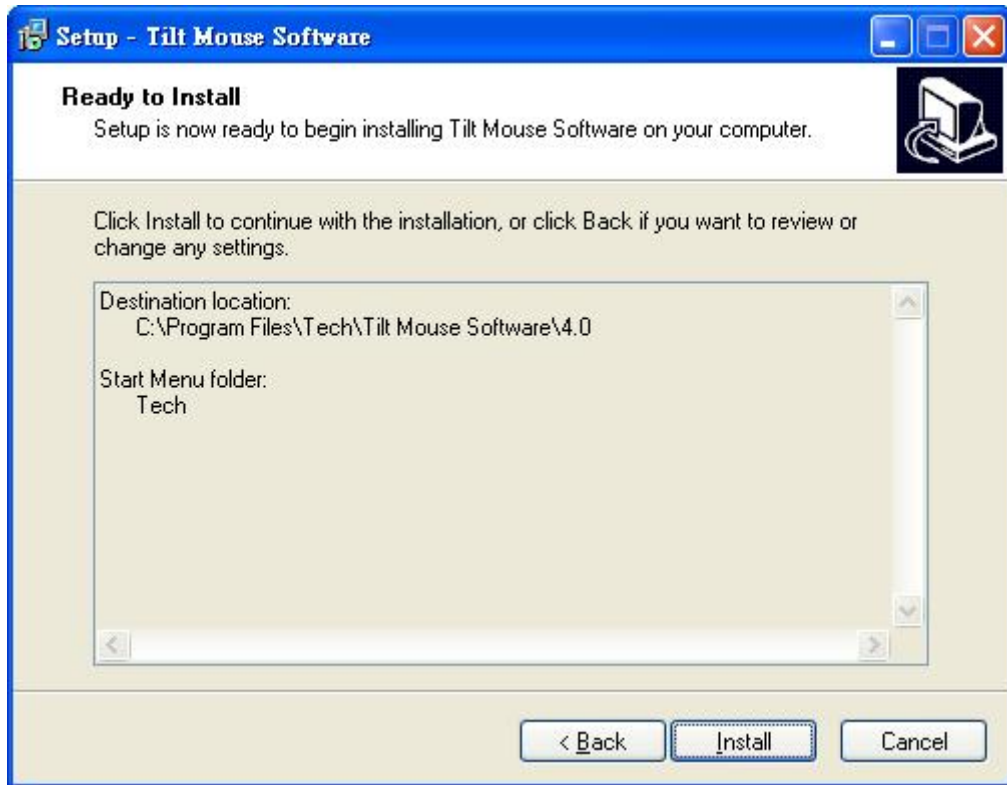


5. The software will appear in a start menu folder named **Tech** by default. (Type another name if you wish to change). Click **Next** to continue.



Tilt Wheel Mouse Software Manual

6. Click **Install** when the dialogue box below appears.



7. Once the installation is complete, click **Finish**. (The default is set to launch the software upon completion of installation. If you do not wish to launch the software immediately, uncheck the “**Launch Tilt Wheel Mouse Software**” box.)

Tilt Wheel Mouse Software Manual



8. The **Tilt Wheel Mouse** software is now successfully installed.

Operating your Tilt Wheel Mouse software

Starting the Tilt Wheel Mouse software package

You can launch the **Tilt Wheel Mouse** software by either of the following ways:

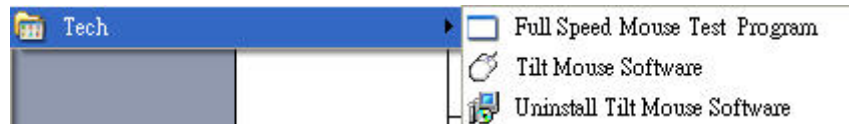
- **From the system tray**

If the software is already running and hidden in the system tray as a mouse icon (🖱️), double click the mouse icon, or right click and select **Setting**.



- **From the Start menu**

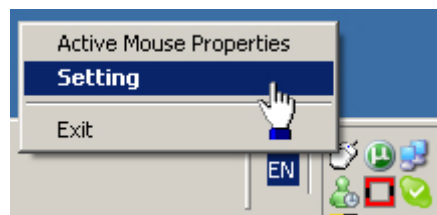
If the software is installed in the default directory, go to **Start > Programs > Tech** (or the name you chose if you did not go with the default “Tech”). You may find the following three options:



- Click “**Full Speed Mouse Test Program**” to launch a small utility that measures the input speed of your mouse.
- Click “**Uninstall Tilt Wheel Mouse**” to uninstall the software.
- Click “**Tilt Wheel Mouse**” to start the software.

Tilt Wheel Mouse icon properties

When you right click on the mouse icon (🖱️), you will be given the following additional options.



Active Mouse Properties:	Launches Windows built-in mouse customization dialogue, (My Computer > Control Panel > Mouse)
Setting:	Launches the Tilt Wheel Mouse software customization program
Exit:	Closes the Tilt Wheel Mouse software program.

Customizing your mouse via the Tilt Wheel Mouse software

Customizing your mouse's wheel options

Launch the **Tilt Wheel Mouse** software as described in “**Starting the Tilt Wheel Mouse software package**” on page 6. The **Tilt Wheel Mouse** main screen appears.



From the **Wheel** tab, you can customize the following mouse wheel functions.

Scrolling Mode: Specify the scrolling mode.	
System default (Intelli-Mouse) mode	Maintains Windows default wheel scroll status.
Enhanced scroll mode	When scrolling a web page, document or program on your computer, Enhanced scroll mode, will jump to what it perceives as new

Tilt Wheel Mouse Software Manual

	sections, paragraphs or tables.
--	---------------------------------

Tilt Wheel Mouse Software Manual

Vertical Scrolling: Specify the speed at which the window will scroll with each notch of the wheel.

x lines at a time

Allows you to customize the number of lines scrolled by each notch on your mouse wheel (Default is 3).

One screen at a time

Each notch will jump a full screen. (Ideal for navigating large documents)

Horizontal Scrolling: Specify the speed at which the window will scroll with each notch of the wheel.

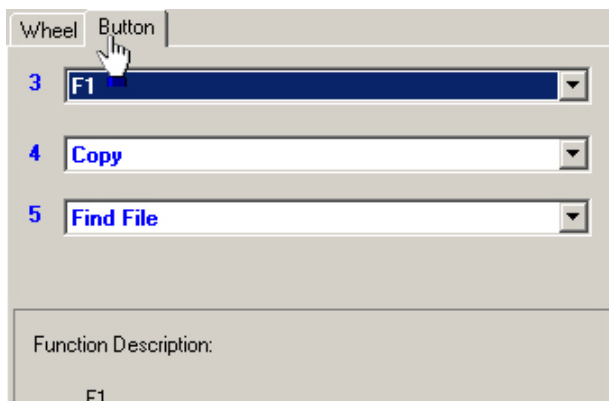
x lines at a time

Allows you to customize the number of lines scrolled by each notch on your mouse wheel (Default is 3).

After altering any settings in the wheel dialogue box, click **Apply** and then **OK** to activate changes.

Customizing your mouse's buttons

When you click on the **Button** tab, the following dialogue box options will appear. The number of fields will depend on the number of buttons on your mouse. Each button can be customized to launch a wide variety of windows commands (see below).



Function Description

A brief description of the function within the selected field will appear in the **Function Description** box.

Tilt Wheel Mouse Software Manual

**** Note**** Only supported mice can be customized via the **Tilt Wheel Mouse** software.

Available Button Customization options (Defining Hot Keys)

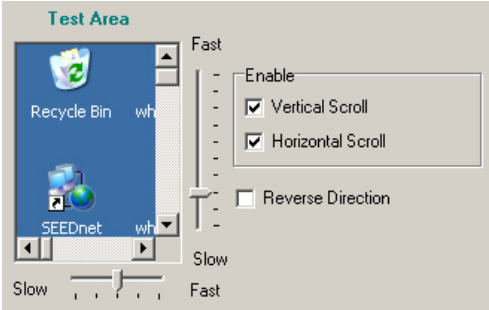
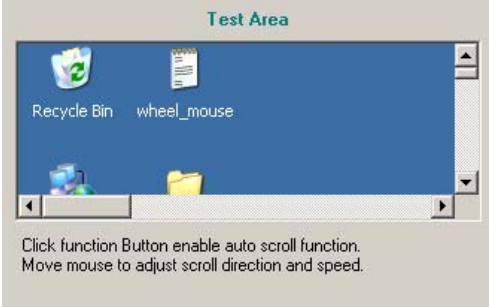
From the **Button** tab, you can assign one of the following options to each mouse button (except the **Left Click** and **Right Click** buttons), allowing key press emulation and single click access to the common windows commands. The functions are described as follows:

Function	Description
System Default	Maintains Windows default button settings.
F1~F10	Fields F1 to F10 let you make any of the F# function keys only a mouse click away.
Esc	Emulates pressing the Esc key.
Backspace	Emulates pressing the Backspace key.
Enter	Emulates pressing the Enter key.
Space	Emulates pressing the Space Bar .
Delete	Emulates pressing the Delete key.
Page Up	Emulates pressing the Page Up key.
Page Down	Emulates pressing the Page Down key.
Tab	Emulates pressing the Tab key.
Home	Jumps to the Beginning of a document, application or webpage.
End	Jumps to the End of a document, application or webpage.
Up	Scrolls up a document, application or web page.
Down	Scrolls down a document or webpage.
Left	Scrolls left on a document, application or webpage.
Right	Scrolls right on a document, application or webpage.
Undo	Emulates the Undo command in Windows and additional applications.
Redo	Emulates the Redo command in Windows and additional applications.

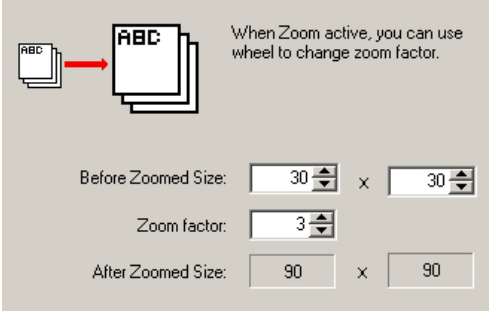

Tilt Wheel Mouse Software Manual

Function	Description
Cut	Emulates the Cut command in Windows and additional applications.
Copy	Emulates the Copy command in Windows and additional applications.
Paste	Emulates the Paste command in Windows and additional applications.
Explorer	Launches Windows File Explorer .
Find Computer	Opens the default Search Companion window for the computer search.
Find File	Opens the default Search Companion window for the file search.
System Help	Launches Windows System Help .
Middle Button	Emulates the Windows default Middle Button behavior.
Minimize All Windows	Minimizes all active windows.
Run...	Launches Windows Run command prompt.
Start Menu	Launches the Start Menu .
System Property	Launches Windows System Property tab.
Undo Minimize All Windows	Undo the Minimize All Windows command.
Control Panel	Launches Windows Control Panel .
Close Application	Closes target applications.
Double Click	Performs a double-click action.
Maximize Window	Maximizes the target application window.
Minimize Window	Minimizes the target application window.

Tilt Wheel Mouse Software Manual

Function	Description	
Shift Lock	Emulates a Shift Lock . It will remain locked until pressed again.	
Control Lock	Emulates a Control (CTRL) Lock . It will remain locked until pressed again.	
Horizontal Wheel	Emulates a horizontal scroll on your wheel button (useful for wide print layouts).	
Launch Default Browser	Launches the default Internet browser.	
Launch Default E-Mail	Launches your default e-mail client.	
Internet Explorer Backward	Emulates your default browser's Back command.	
Internet Explorer Forward	Emulates your default browser's Forward command.	
Universal Scroll		Allows you to scroll Documents, Applications and even your Desktop , without scroll bars.
Auto Scroll		Allows you to Auto Scroll your Documents, Applications and Desktop .

Tilt Wheel Mouse Software Manual

Function	Description	
Universal Zoom	 <p>When Zoom active, you can use wheel to change zoom factor.</p> <p>Before Zoomed Size: 30 x 30</p> <p>Zoom factor: 3</p> <p>After Zoomed Size: 90 x 90</p>	<p>Allows you to zoom in and out on the click of a button. When the Zoom is active, you can use the wheel to change the zoom factor.</p>
Connect To Internet	 <p>Enter a web address you want to connect</p> <p>www.google.com</p>	<p>Allows you to Connect to the Internet. You can set a default launch page in the additional field below the option.</p>