

Mini Flash Drive Windows 98SE Installation Guide.

1. Connect to the internet.
2. Go to our website for download of mini flash drive driver. (Mini Flash drive is one with a silver USB connector)

http://www.imation-southasia.com/support/drivers/USB20%20FlashDrive%20Mini_V10a_W98SE.exe

3. Download the file to the desktop.
4. Insert a blank diskette into your floppy disk drive.
5. Double click the file that you have downloaded, to unzip the file and extract to the diskette
6. You should see 5 files in your diskette drive. See below for the files.

Imation_usbflashdrive.inf
Readme.txt
Removal.txt
UMSSPDR.PDR
UMSS.SYS

7. Plug in or insert your mini flash drive into a USB port on your computer. Try not to connect it through any USB hub.
8. Windows 98SE should detect a new hardware and launches "The Add New Hardware Wizard" automatically.
9. Click "Next" to start the installation.



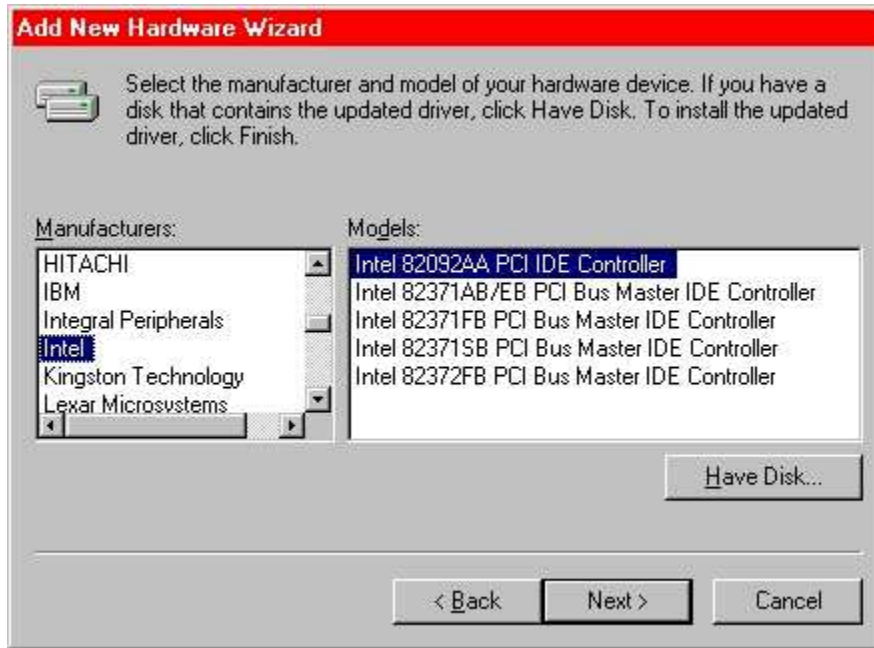
10. Select the second radio button as shown and click "Next".



11. Scroll down to choose the type of device and highlight "Hard disk controllers" and click "Next".



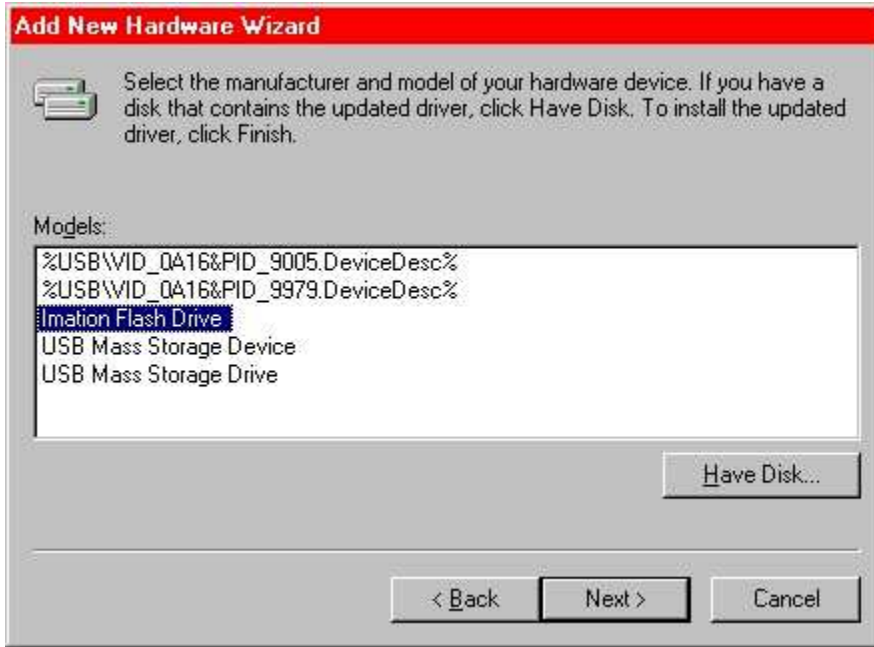
12. Do not select any files, you just have to click "Have Disk".



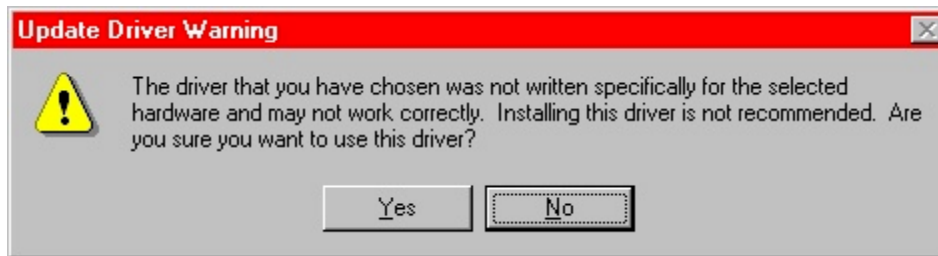
13. Ensure that you have selected to floppy drive A: or the location of the files, which you have unzipped. Click ok.



14. Select "Imation Flash Drive" and click "Next".



15. Ignore the Windows "Update Driver Warning " and click "Yes".



16. Click "Next" to continue.



17. Click "Finish" to end the wizard.



18. Under "My Computer", you should see a "Removable Drive" .This should be your mini flash drive.

If you check devices in "Device Manager", you should see :-

- i.Under "Hard disk controllers" is "Imation Flash Drive".
- ii.Under "Disk drives" is "Imation Flash Drive".
- iii.Under "Universal Serial Bus controllers", there is **no** "Imation Flash Drive".

Note:-

- 1) If the "Add New Hardware Wizard" does not start automatically, go to "Control Panel".
- 2) Select "System".
- 3) In "System Properties" select the tab "Device Manager".
- 4) In the "Device Manager", remove any devices with a " yellow ? or ! mark ".
- 5) Close the "Device Manager".
- 6) Unplug & then plug back or reinsert the mini flash drive into the USB hub port.
- 7) In rare cases, it might be necessary to insert your mini flash drive directly to your PC USB port & not a port in the USB hub.
- 8) The "Add New Hardware Wizard" should automatically launch.
- 9) After installation, check for "Removable Drive" under "My Computer" in "Window Explorer".