

User Manual for Imation Flash Login Software

Introducing Imation Flash Login

You can use Imation Flash Login to create a password protected secure partition on Imation Swivel Pro USB 2.0 flash drive.

System Requirements

- Microsoft Windows XP Home and Professional, Windows Vista and Windows 7
- Celeron 500 MHz CPU
- 64MB RAM (128MB recommended)
- 10GB Hard Disk Drive space
- USB 1.1/2.0

Usage Constraints

Please take note the following when using Imation Flash Login software

- Always use the “Safely Remove Hardware” feature provided by Windows to safely unplug the drive
- Do not delete the “Imation Flash Logout.exe” file located in the password protected partition of the drive

Using Imation Flash Login

The Imation Flash Login software enables you to create a password protected area on your flash drive. The software allows you to make the entire drive password protected or only a portion of the drive as password protected.

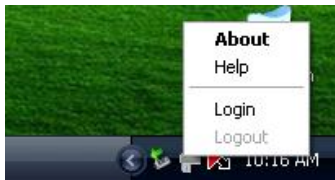
If only a portion of the drive memory is password protected, the remainder of the drive memory is publicly accessible. Also, you will be able to access either the private portion or the public portion of the drive memory at any given time. Both public and private portions of the drive memory can never be accessed simultaneously.

Getting Started

Launch the Imation Flash Login software by double clicking on the “Imation Flash Login.exe” file. The “Imation Flash Login.exe” file can be present on the flash drive or anywhere on the PC. The software must be launched for the first time on a PC by double clicking “Imation Flash Login.exe”. Subsequently, when a compatible flash drive is connected to the same PC, the Imation Flash Manager software launches a system tray icon as shown in the figure here.



You can start using the software features from the menu options available by right clicking on the system tray icon. Click on the menu item ‘Login’ to launch the Login page. The tray icon menu is as shown below:



You can also get started by double clicking on “Imation Flash Login.exe”. The opening screen or the ‘Login’ screen will be as shown below:



The Login and Change Password feature will be disabled until a password protected private partition is created.

Create Partition

A brand new drive has no private partitions. The entire drive memory is publicly accessible. From the opening window or the login page, click on the Create Partition button. This will lead you to the Create Partition window. The Create Partition window allows you to create 3 kinds of partitions.

1) Private partition

You can make the entire drive password protected. In the Create Partition window, move the capacity scroll bar to the extreme right. Enter a password, confirm the password and for password assistance enter a hint as shown in the example below and click on the OK button.



Note: The Hint will be shown to anyone who has access to the drive. So, choose a hint that does not assist an unauthorized user from guessing the password.

Please note that the drive will need to be formatted in order to create a partition and all the data on the drive will be erased. If you have data on the drive that needs to be saved, click the Cancel button in the warning message shown below. If you would like to create the private partition now, click OK.



The following confirmation screen will be shown after the private partition is successfully created.



Note: If you forget your password the data in the private partition will not be accessible.

2) Public & Private Partition

You can make a portion of the drive memory as password protected and the remainder of the drive memory will automatically be publicly accessible. Select the capacity of the private partition using the scroll bar. Enter a password, confirm the password and enter a hint for password assistance and click on the OK button. The screen below shows a secure partition of 950MB on a 2GB drive.



Please note that creating a partition formats the drive and all the data on the drive will be erased. If you have data on the drive that needs to be saved click the Cancel button and save your data.

Note: If you forget your password the data in the private partition will not be accessible.

3) Public partition

You can remove the private partition on a drive and make the entire drive as one public partition. In the Create Partition window, move the scroll below to the extreme left and click on the OK button.



Please note that creating a partition formats the drive and all the data on the drive will be erased. If you have data on the drive that needs to be saved, click the Cancel button and save your data to another storage device first.

Login

This feature allows you to Login to the private partition of the drive memory. If a password protected private partition does not exist the Login button is grayed out. From the opening screen or the Login page, click on the Login button. This will lead you to the Login window. In the Login window, you can click on the Hint button for password assistance. If you know your password, enter it in the Password box and click on the OK button.



A warning message will be generated if you enter the incorrect password.



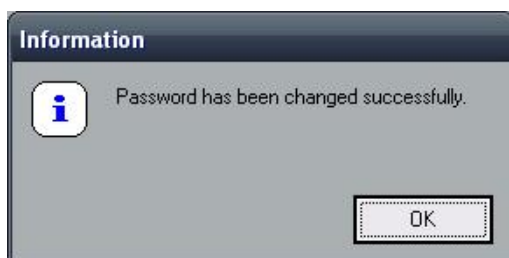
Acknowledge the incorrect password message and try Login again.

Change Password

This feature allows to change the password for the secure private partition. If a private partition does not exist the Change Password button is grayed out. From the opening screen or the Login page, click on the Change Password button. This will lead you to the Change Password window.



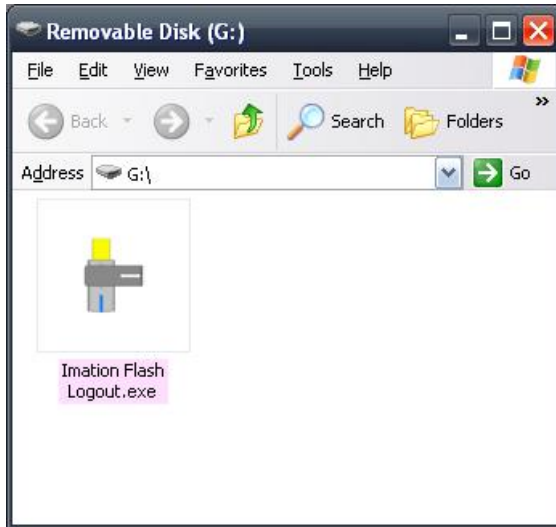
To change your password, first enter the old password. Then enter and confirm the new password. If you would like, enter a hint for the new password and click on the OK button. After the password is successfully changed you will see the following screen:



Logout

You can Logout of the private partition in the 2 ways.

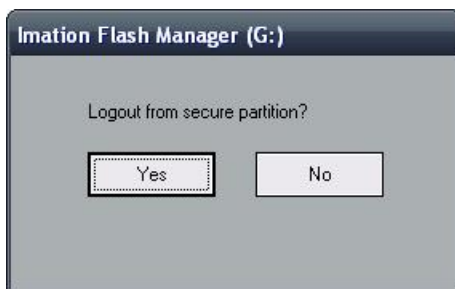
- 1) Find the “Imation Flash Logout.exe” file in the password protected portion of your drive and launch the file by double clicking on it.



- 2) From the Imation Flash Login tray icon menu, click on Logout.



Both the actions mentioned above will lead you to the Logout page. The Logout page is as shown below:



Click on the button Yes to Logout and click on the button No, if you would like to stay in the private partition.